

# Astrocade™

THE PROFESSIONAL

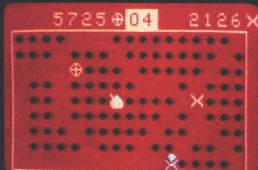
# VIDEOCADDE™

CARTRIDGE



## PIRATE'S CHASE 2015

Yo ho ho and a bottle of rum! Race to scoop up as many gold doubloons as you can carry, but watch out! The pirates are on your trail! How much of the treasure can you collect before Long John Silver collects *you*? Score points for every doubloon and treasure chest you can steal from the pirate crew! A frantic, fast-paced game, and the action never stops. 1 or 2 players.



## **PIRATE'S CHASE #2015**

### **LOADING INSTRUCTIONS**

1. Turn on your Astrocade and TV set, then select channel 3 or 4.
2. Connect the hand controls by inserting control #1 into the first jack on the back left side (as you face the front of the Astrocade). From left to right, the jacks connect to players 1, 2, 4 and 3.
3. Insert the game cartridge, label side up, into the cartridge slot. Press it down firmly to lock it into position.
4. Press the RESET button, and the menu of games will be displayed.

## PIRATE'S CHASE (1 or 2 players)

You're searching for treasure on the golden sands of Pirate's Island. The beach is literally covered with gold doubloons. But the treasure is cursed! It is guarded by a hideous skull and crossbones which follows you around and attempts to destroy you. Race to scoop up the treasure and escape!

### STARTING THE GAME

Choose Pirate's Chase by pressing 1 on the keypad or by using remote game selection (pull the trigger on hand control #1, turn the knob until it appears on the screen, then pull the trigger again).

Enter the number of players (1 or 2). Player #1 is indicated by the symbol  $\oplus$ , player #2's symbol is an  $\times$ .

Select the skill level (1-9). As you choose higher and higher skill levels, the skull and crossbones attacks you with greater speed and fury. By the time you reach level 9, you will have great difficulty escaping with the treasure!

Choose the number of turns (1-99). You will receive an extra turn for every complete screen of doubloons you are able to scoop up.

### PLAYING THE GAME

The hand control functions for Pirate's Chase are:

Trigger	Has no function.
Knob	Has no function.
Joystick	Moves your symbol in eight directions, including horizontally, vertically and diagonally.

As soon as you have entered the number of turns, a screen will appear showing your score (currently zero), the value of the gold doubloons and the value of the special treasure which you will find at the center of the island. This special treasure changes after you scoop up each complete screen of doubloons. The treasure includes gold rings, engraved swords, priceless gems, chalices of pure silver and treasure chests.

Although the skull and crossbones (the spirit of Long John Silver!) guards the precious treasure very closely, he will occasionally get careless and move away from it. This is your chance to move in with the joystick and steal it from him. He will pursue you all over the island, so you will have to move quickly to elude him.

When you have picked up the last piece of gold in the sand, another entire screen of treasure will appear. The value of the treasure will increase and you will also get an extra turn. But, be forewarned, the more gold you steal, the angrier you will make the spirit of Long John Silver. He will pursue you more rapidly than ever before — so run fast or you will not survive for long!

## SCORING

The longer you survive on Pirate's Island and the more gold doubloons you scoop up, the higher your score will be. At first, one point will be awarded for every doubloon you seize, and 100 points will be given if you snatch one of the gold rings. The point values for each complete screen of treasure are as follows:

### First Screen

Doubloons	1 point
Gold Rings	100 points

### Second Screen

Doubloons	2 points
Engraved Swords	200 points

### Third Screen

Doubloons	3 points
Priceless Gems	300 points

### Fourth Screen

Doubloons	4 points
Silver Chalice	400 points

### Fifth Screen

Doubloons	5 points
Treasure Chests	500 points

As you can see, the doubloons gain one point and the special treasure gains 100 points for each screen you complete. After the fifth screen, the sequence of gold rings, engraved swords, priceless gems, silver chalices and treasure chests is repeated with increased reward.

Two-player games are fast-paced and exciting — compete for the highest number of points. Each player's total points are shown at the top of the screen: player #1's score is shown at the upper left, with player #2's score shown at the upper right.

## PLAYING AGAIN

To play Pirate's Chase again, press the RESET button (or pull the trigger on hand control #1), and follow the instructions for starting the game.

## LIMITED WARRANTY

Astrocade, Inc., 6460 Busch Blvd., Suite 215, Columbus, OH, 43229 (the "Warrantor") hereby warrants, to the original purchaser only, that this product will be free from defects in materials and workmanship, under normal use, for a period of 90 days from the date of purchase.

The Warrantor shall have no liability or responsibility to purchaser or any other person or entity with respect to any liability, loss or damage caused or alleged to be caused directly or indirectly by this product, including but not limited to any interruption of service, loss of business and anticipatory profits or consequential damages resulting from the use or operation of this product.

If during this 90-day period a defect in this product should occur, the product may be returned to: Astrocade, Inc., or to an authorized Astrocade, Inc. dealer and Astrocade, Inc. will replace this product without charge.

When requesting performance under the terms of this warranty, the original purchase date must be established by the customer by means of a bill of sale, invoice, or other acceptable documentation.

This warranty gives you specific legal rights, and you may also have other rights which vary from state to state.

Some states do not allow the exclusion or limitation of incidental or consequential damages, so the above limitations or exclusions may not apply to you.



**Astrocade™**

**6460 BUSCH BLVD., SUITE 215  
COLUMBUS, OHIO 43229**